

**STRIPAX****Weidmüller Interface GmbH & Co. KG**

Klingenbergstraße 26

D-32758 Detmold

Germany

www.weidmueller.com



- Stripping tools with automatic self-adjustment
- For flexible and solid conductors
- Ideally suitable for mechanical and plant engineering, railway and rail traffic, wind energy, robot technology, explosion protection as well as marine, offshore and ship building sectors
- Stripping length adjustable via end stop
- Automatic opening of clamping jaws after stripping
- No fanning-out of individual conductors
- Adjustable to diverse insulation thicknesses
- Double-insulated cables in two process steps without special adjustment
- No play in self-adjusting cutting unit
- Long service life
- Optimised ergonomic design

**General ordering data**

Version	Tools, Stripping and cutting tool
Order No.	<a href="#">9005000000</a>
Type	STRIPAX
GTIN (EAN)	4008190072506
Qty.	1 items

## STRIPAX

**Weidmüller Interface GmbH & Co. KG**

Klingenbergstraße 26  
D-32758 Detmold  
Germany

[www.weidmueller.com](http://www.weidmueller.com)

## Technical data

### Dimensions and weights

Depth	22 mm	Depth (inches)	0.8661 inch
Height	99 mm	Height (inches)	3.8976 inch
Width	190 mm	Width (inches)	7.4803 inch
Net weight	174.63 g		

### Environmental Product Compliance

RoHS Compliance Status	Not affected
REACH SVHC	Lead 7439-92-1
SCIP	cf06c250-ed1e-4a45-9c1b-c5c8cbf13bf0

### Technical data

Description of article	Stripping tool for up to 10 mm <sup>2</sup>
------------------------	---

### Stripping tools

Cable type	Flexible and solid conductors with PVC insulation	Conductor cross-section (cutting capacity)	6 mm <sup>2</sup>
Stripping range AWG, max.	8 AWG	Stripping range AWG, min.	28 AWG
Stripping range, min.	0.08 mm <sup>2</sup>	Stripping length, max.	25 mm
Conductor cross-section, max.	10 mm <sup>2</sup>	Conductor cross-section, min.	0.08 mm <sup>2</sup>

### Classifications

ETIM 6.0	EC002109	ETIM 7.0	EC002109
ETIM 8.0	EC002109	ETIM 9.0	EC002109
ETIM 10.0	EC002109	ECLASS 9.0	21-04-37-06
ECLASS 9.1	21-04-37-06	ECLASS 10.0	21-04-37-06
ECLASS 11.0	21-04-37-06	ECLASS 12.0	21-04-37-06
ECLASS 13.0	21-04-37-06	ECLASS 14.0	21-04-37-06
ECLASS 15.0	21-04-37-06		

**STRIPAX**

**Weidmüller Interface GmbH & Co. KG**  
Klingenbergstraße 26  
D-32758 Detmold  
Germany

**Drawings**

[www.weidmueller.com](http://www.weidmueller.com)

**Example of use**



## STRIPAX

Weidmüller Interface GmbH &amp; Co. KG

Klingenbergstraße 26

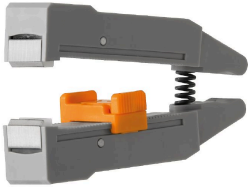
D-32758 Detmold

Germany

## Accessories

www.weidmueller.com

## Accessories / replacement parts



- Stripping tools with automatic self-adjustment
- For flexible and solid conductors
- Ideally suitable for mechanical and plant engineering, railway and rail traffic, wind energy, robot technology, explosion protection as well as marine, offshore and ship building sectors
- Stripping length adjustable via end stop
- Automatic opening of clamping jaws after stripping
- No fanning-out of individual conductors
- Adjustable to diverse insulation thicknesses
- Double-insulated cables in two process steps without special adjustment
- No play in self-adjusting cutting unit
- Long service life
- Optimised ergonomic design

## General ordering data

Type	ERME 10 <sup>2</sup> SPX 4	Version
Order No.	<a href="#">1119030000</a>	Accessories, Cutter holder
GTIN (EAN)	4032248948420	
Qty.	1 ST	
Type	ERTE KLBC SPX 10	Version
Order No.	<a href="#">2571480000</a>	Accessories, Replacement clamping jaw
GTIN (EAN)	4050118582109	
Qty.	1 ST	
Type	ERTE BAGR AN KP SPX 4	Version
Order No.	<a href="#">2905400000</a>	Accessories, Replacement clamping jaw
GTIN (EAN)	4099986551381	
Qty.	1 ST	